



The product images are for illustration purposes only. Actual product appearance, ports, keyboard layout, and accessories may vary by model.

- AMD Ryzen 5 7520U (4C / 8T, 2.8 / 4.3GHz, 2MB L2 / 4MB L3)
- 16GB Soldered LPDDR5-5500
- 512GB SSD M.2 2242 PCIe 4.0x4 NVMe
- Integrated AMD Radeon 610M Graphics
- Windows 11 Pro, German
- Case color - Business Black
- 1-year, Courier or Carry-in

Premium Care - Advanced Support from Real People. Real Fast.



REAL PERSON

Choose how you want to reach us - through the phone, chat or email - our expert technicians will take care of you.



REAL FAST

Highly trained technicians will provide you real-time solutions, whatever the issue, on your first contact. If needed, our team will schedule an onsite visit for the next business day.



HASSLE FREE

'Getting started' and 'how-to' assistance for hardware and software. Easy solutions that are simple to reach - that's how Premium Care delivers you the ideal support experience.



PC HEALTH CHECK

Free annual PC Health Check that allows our experts to spot issues before you do so they can resolve them quickly and help you avoid PC problems.

Accidental Damage Protection - Protection of your PC from the unexpected.

Experience shows that a significant portion of devices may be damaged (and not covered under warranty) in the first three years. Lenovo's Accidental Damage Protection service covers accidents beyond the system warranty such as drops, spills, bumps and even electrical surges. Make sure your new device has maximum protection, avoid unplanned costs and get peace of mind.

Base Warranty - Included with the systems you purchase, default 1- or 3-year coverage window.

Warranty Extensions & Upgrades - Service and protection that's right for your circumstances.

- Pick Up & Return Courier
- Onsite Support
- Technician Installed Customer
- Replaceable Unit Service
- International Warranty Upgrade

Recommended Accessories Austria



Lenovo Essential Stereo Analog Headset

4XD0K25030



ThinkPad Bluetooth Presenter Mouse (Aura Edition)

4Y51T62792



Lenovo USB 20Gbps USB-C to USB-C Cable 1.5m

4X91U92143



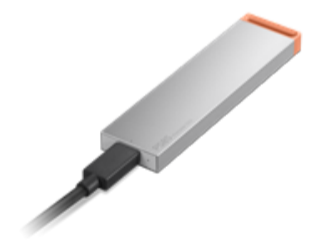
Lenovo 16" Laptop Everyday Backpack B510

4X41U80414



Lenovo Dual USB-C 65W GaN Charger

GOA6065WEU



Lenovo PS8S Portable SSD 4TB

4XB1T91892

>> [View More Accessories](#)

PERFORMANCE**Processor**

AMD Ryzen™ 5 7520U (4C / 8T, 2.8 / 4.3GHz, 2MB L2 / 4MB L3)

Graphics

Integrated AMD Radeon™ 610M Graphics

Chipset

AMD SoC Platform

Memory

16GB Soldered LPDDR5-5500

Memory Slots

Memory soldered to systemboard, no slots, dual-channel

Max Memory

16GB soldered memory, not upgradable

Storage

512GB SSD M.2 2242 PCIe® 4.0x4 NVMe®

Storage Slot

One M.2 2242 PCIe® 3.0 x2 slot

Max Storage Support

One drive, up to 1TB M.2 2242 SSD

Optical

None

Card Reader

No Card Reader

Audio Chip

High Definition (HD) Audio, Realtek® ALC3287 codec

Speakers

Stereo speakers, 1.5W x2, Dolby Audio™

Microphone

2x, Array

Camera

HD 720p with Privacy Shutter

Battery

38Wh

Power Adapter

65W Round Tip (3-pin)

DESIGN**Display**15.6" FHD (1920x1080) IPS 300nits Anti-glare^[1]**Touchscreen**

None

Screen-to-Body Ratio

87%

Pen

Pen Not Supported

Keyboard

Non-backlit, German

Touchpad

Buttonless Mylar® surface multi-touch touchpad, supports Precision TouchPad (PTP), 62 x 104 mm (2.44 x 4.09 inches)

Dimensions (WxDxH)^[2]

359.2 x 235.8 x 19.9 mm (14.14 x 9.28 x 0.78 inches)

Weight^[3]

Less than 1.63 kg (3.59 lbs)

Case Color

Business Black

Case Material

PC-ABS (Top), PC-ABS (Bottom)

Surface Treatment

Texture

SOFTWARE**Operating System**

Windows® 11 Pro, German

Bundled Software

Office Trial

CONNECTIVITY**WLAN + Bluetooth**

Wi-Fi® 6, 802.11ax 2x2 + BT5.3

WWAN

WWAN Not Supported

Ethernet

100/1000M (RJ-45)

Standard Ports

- 2x USB-A (USB 5Gbps / USB 3.2 Gen 1)
- 1x USB-C® (USB 5Gbps / USB 3.2 Gen 1), with USB PD 45-65W and DisplayPort™ 1.2
- 1x HDMI® 1.4b
- 1x Headphone / microphone combo jack (3.5mm)
- 1x Ethernet (RJ-45)
- 1x Round tip power connector

DockingVarious docking solutions supported via USB-C®. For more compatible docking solutions, please visit [Docking for Lenovo® V15 G4 AMN](#)**SECURITY & PRIVACY****Security Chip**

Firmware TPM 2.0 Enabled

Physical Locks

Kensington Nano Security Slot™, 2.5 x 6 mm

Fingerprint Reader

No Fingerprint Reader

Other Security

Camera privacy shutter

SERVICE**Base Warranty**

1-year, Courier or Carry-in

Included Upgrade

None

ACCESSORIES**Bundled Accessories**

None

CERTIFICATIONS**Green Certifications**

- ENERGY STAR® 9.0
- EPEAT™ Silver Registered^[4]
- ErP Lot 3
- FSC certified package
- RoHS compliant

Mil-Spec Test

MIL-STD-810H military test passed

Other Certifications

TÜV Rheinland® Low Blue Light (Software Solution)

MODEL**TopSeller** : Yes **EAN / UPC / JAN:** 199276102645**Announce Date:** 2026-03-16 **End of Support** : 2029-08-19**Note:**^[1] IPS (in-plane switching) technology may refer to IPS, PLS, ADS, AHVA, AAS.^[2] The system dimensions may vary depending on configurations.^[3] The system weight is approximate and based on results in Lenovo lab, which varies depending on the source of component, variance of the distribution of each component, and manufacturing process. It may not be the exact weight for each specific model.^[4] EPEAT is registered where applicable, please visit epeat.net for registration status by country.

- Please refer to the official [Lenovo store website](#) or contact a local Lenovo sales representative or authorized business partner for current inventory and purchase options.
- Lenovo reserves the right to change specifications without notice.