

## PERFORMANCE

### Processor

Intel® Core™ i7-13700T, 16C (8P + 8E) / 24T, P-core 1.4 / 4.8GHz, E-core 1.0 / 3.6GHz, 30MB

### Processor Sockets

1x FCLGA1700

### Integrated Graphics

Integrated Intel UHD Graphics 770

### Discrete Graphics

1x NVIDIA® T400 4GB

### Chipset

Intel Q670 Chipset

### Memory

1x 16GB SO-DIMM DDR5-4800 Non-ECC

### Memory Slots

Two DDR5 SO-DIMM slots, dual-channel capable

### Max Memory

Up to 64GB (2x 32GB DDR5 SO-DIMM)

### M.2 SSD RAID Controller

Integrated NVMe® controller

### M.2 SSD Drive

1x 512GB SSD M.2 2280 PCIe® 4.0x4 Performance NVMe Opal

### Storage Support

Up to two drives, 2x M.2 SSD, up to 2TB each

### Optical

None

### Audio Chip

High Definition (HD) Audio, Realtek® ALC256VB codec

### Power Supply

230W 90% Adapter

## DESIGN

### Keyboard

USB Traditional Keyboard, Black, German

### Mouse

USB Calliope Mouse, Black

### Expansion Slots

One PCIe 4.0 x8, low-profile

### M.2 Slots

- Two M.2 PCIe Gen 4x4 slots (for SSD)
- One M.2 slot (for WLAN)

### Bays

No bays

### Dust Filter

None

### Toolless Chassis Screw

Toolless Chassis Screw

### Mounting

None

### Stand

None

### Dimensions (WxDxH)

Tiny only 179 x 182.9 x 37mm with rubber feet (7.0 x 7.2 x 1.5 inches with rubber feet)

Tiny & ODD 204.2 x 186.6 x 64 mm with rubber feet (8.04 x 7.35 x 2.52 inches with rubber feet)

### Weight

1.4 kg (3 lbs, maximum configuration)

## CONNECTIVITY

### Onboard Ethernet

Intel I219-LM, 1x GbE RJ-45

### Optional Ethernet

None

### WLAN + Bluetooth®

None

### Front Ports

- 1x USB 3.2 Gen 2
- 1x USB 3.2 Gen 2 (Always On and 5V@2.1A charging)
- 1x USB-C® 3.2 Gen 2
- 1x headphone / microphone combo jack (3.5mm)

### Rear Ports

- 1x HDMI® 2.1 TMDS
- 1x DisplayPort™ 1.4
- 2x USB 3.2 Gen 1 (one supports Smart Power On)
- 2x USB 3.2 Gen 2
- 1x Ethernet (RJ-45)

### Optional Rear Ports (configured)

None

## SECURITY & PRIVACY

### Security Chip

Discrete TPM 2.0, TCG certified

### Physical Locks

Kensington® Security Slot™, 3 x 7 mm

### Cable Lock

## MANAGEABILITY

### System Management

Intel® vPro® Enterprise with Intel AMT 16

## SERVICE

### Base Warranty

3-year, Onsite

### Included Upgrade

1Y Premier Support from 3Y Onsite Windchill bundles (CPN) (5WS1B68726)

## CERTIFICATIONS

### Case Color

Black

### Green Certifications

- EPEAT™ Gold Registered
- ENERGY STAR® 8.0
- ErP Lot 3
- TCO Certified 9.0
- RoHS compliant

### ISV Certifications

Please visit [ISV certifications for Lenovo® Workstations](#)

### Mil-Spec Test

MIL-STD-810H military test passed

## SOFTWARE

### Operating System

Windows® 11 Pro, German

### Bundled Software

None

## MODEL

TopSeller : Yes      **Announce Date** : 2023-03-30

**EAN / UPC / JAN** : 0196804528540      **End of Support** : 2031-04-30

None

**Chassis Intrusion Switch**

Chassis Intrusion Switch

## Premier Support - A direct 24x7x365 line to our most elite technicians.



Advanced technical support, 24x7x365, in more than 100 markets



Technical Account Managers for proactive relationship and escalation management



Comprehensive hardware & OEM software support



Priority on service delivery and repair parts



Single point of contact for simplified end-to-end case management



Lenovo Service Connect Portal for customized reporting and product support

## Accidental Damage Protection - Protection of your PC from the unexpected.

Experience shows that a significant portion of devices may be damaged (and not covered under warranty) in the first three years. Lenovo's Accidental Damage Protection service covers accidents beyond the system warranty such as drops, spills, bumps and even electrical surges. Make sure your new device has maximum protection, avoid unplanned costs and get peace of mind.

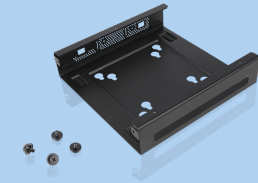
## Base Warranty - Included with the systems you purchase, default 1- or 3-year coverage window.

## Warranty Extensions & Upgrades - Service and protection that's right for your circumstances.

- Pick Up & Return Courier
- Onsite Support
- Technician Installed Customer
- Replaceable Unit Service
- International Warranty Upgrade

Lenovo may not offer the products, services or features discussed in this document in all regions. Lenovo may withdraw an offering at any time. Information is subject to change without notice. Consult your local representative for information on offerings available in your area. Lenovo reserves the right to change specifications or other product information without notice. Lenovo is not responsible for photographic or typographical errors. Lenovo provides this publication "as is" without warranty of any kind, either express or implied, including the implied warranties of merchantability or fitness for a particular purpose.

## Recommended Accessories



### ThinkCentre Tiny VESA Mount II

4XFON03161

The ThinkCentre Tiny VESA Mount II is a unique design specific to house the Tiny PC while featuring the universal VESA mount configuration. The VESA standard enables this mount to attach to anything that is VESA comp...

## Recommended Services

BEST	5Y Premier Support upgrade from 1Y Premier Support (5WS1F52293)
BETTER	3Y Premier Support upgrade from 1Y Premier Support (5WS1B61706)
GOOD	2Y Premier Support upgrade from 1Y Premier Support (5WS1B61703)

For a full list of accessories and services, please visit:  
<https://smartfind.Lenovo.com>



**PSREF**  
Product Specifications  
Reference