

PERFORMANCE

Processor

Intel® Core™ i7-1165G7 (4C / 8T, 2.8 / 4.7GHz, 12MB)

Graphics

NVIDIA® Quadro® T500 4GB GDDR6

Chipset

Intel SoC Platform

Memory

16GB Soldered DDR4-3200 non-ECC

Memory Slots

One memory soldered to systemboard, one DDR4 SO-DIMM slot, dual-channel capable

Max Memory

Up to 48GB (16GB soldered + 32GB SO-DIMM) DDR4-3200

Storage

512GB SSD M.2 2280 PCIe® x4 NVMe® Opal2

Storage Support

One drive, up to 2TB M.2 2280 SSD

Storage Slot

One M.2 2280 PCIe Gen 3x4 slot, supports M.2 2242/2280 SSD

Card Reader

MicroSD Card Reader

Audio Chip

High Definition (HD) Audio, Realtek® ALC3287 codec

Speakers

Stereo speakers, 2W x2, Dolby® Audio™

Camera

IR & HD 720p with Privacy Shutter

Microphone

2x, Array

Battery

Integrated 50Wh

Max Battery Life

MobileMark® 2018: 9.7 hr

JEITA 2.0: 16 hr

Power Adapter

65W USB-C® (3-pin)

DESIGN

Display

14" FHD (1920x1080) IPS 300nits Anti-glare, Touch

Touchscreen

10-point Multi-touch

Keyboard

Backlit, German

Case Color

Black

Case Material

PC + ABS (Top), PC + ABS / Talc15 + Magnesium Alloy (Keyboard Cover), PA / 50% GF (Bottom)

Dimensions (WxDxH)

329 x 227 x 17.9 mm (12.95 x 8.94 x 0.70 inches)

Weight

1.469 kg (3.24 lbs)

SOFTWARE

Operating System

Windows® 11 DG Windows 10 Pro 64, German

CONNECTIVITY

Ethernet

100/1000M

WLAN + Bluetooth®

Intel AX201 11ax, 2x2 + BT5.2

WWAN

WWAN Upgradable to 4G

Standard Ports

- 1x USB 3.2 Gen 1
- 1x USB 3.2 Gen 1 (Always On)
- 2x Thunderbolt™ 4 / USB4® 40Gbps (support data transfer, Power Delivery 3.0 and DisplayPort™ 1.4)
- 1x HDMI® 2.0
- 1x microSD card reader
- 1x Headphone / microphone combo jack (3.5mm)

Optional Ports (configured)

1x RJ45 + 1x Smart Card Reader

Docking

Various docking solutions supported via side docking connector (optional), Thunderbolt or USB-C.

For more compatible docking solutions, please visit [Docking for ThinkPad® P14s Gen 2 \(Intel\)](#)

SECURITY & PRIVACY

Smart Card Reader

Smart Card Reader

Security Chip

Discrete TPM 2.0

Fingerprint Reader

Touch Style, Match-on-Chip

Physical Locks

Kensington® Security Slot, 3 x 7 mm

MANAGEABILITY

System Management

Non-vPro

SERVICE

Base Warranty

3-year, Depot

Included Upgrade

1Y Premier Support from 3Y Depot Windchill bundles (CPN) (5WS1B68729)

CERTIFICATIONS

Green Certifications

- EPEAT™ Gold
- ENERGY STAR® 8.0
- TCO Certified Notebooks 8
- RoHS compliant

Mil-Spec Test

MIL-STD-810H military test passed

ISV Certifications

Please visit www.thinkworkstations.com/isv-certifications/

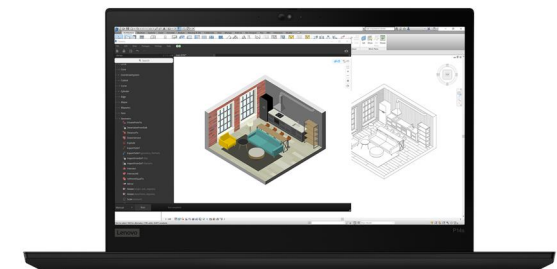
MODEL

TopSeller : Yes

Announce Date : 2022-04-05

EAN / UPC / JAN : 0196800615855

End of Support : 2027-09-23



Premier Support - A direct 24x7x365 line to our most elite technicians.



Advanced technical support, 24x7x365, in more than 100 markets



Technical Account Managers for proactive relationship and escalation management



Comprehensive hardware & OEM software support



Priority on service delivery and repair parts



Single point of contact for simplified end-to-end case management



Lenovo Service Connect Portal for customized reporting and product support

Accidental Damage Protection - Protection of your PC from the unexpected.

Experience shows that a significant portion of devices may be damaged (and not covered under warranty) in the first three years. Lenovo's Accidental Damage Protection service covers accidents beyond the system warranty such as drops, spills, bumps and even electrical surges. Make sure your new device has maximum protection, avoid unplanned costs and get peace of mind.

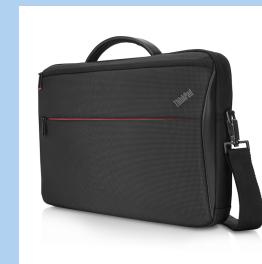
Base Warranty - Included with the systems you purchase, default 1- or 3-year coverage window.

Warranty Extensions & Upgrades - Service and protection that's right for your circumstances.

- Pick Up & Return Courier
- Onsite Support
- Technician Installed Customer
- Replaceable Unit Service
- International Warranty Upgrade

Lenovo may not offer the products, services or features discussed in this document in all regions. Lenovo may withdraw an offering at any time. Information is subject to change without notice. Consult your local representative for information on offerings available in your area. Lenovo reserves the right to change specifications or other product information without notice. Lenovo is not responsible for photographic or typographical errors. Lenovo provides this publication "as is" without warranty of any kind, either express or implied, including the implied warranties of merchantability or fitness for a particular purpose.

Recommended Accessories



ThinkPad 14-inch Professional Slim Topload 4X40W19826

The ThinkPad 14-inch Professional Slim Topload is a sleek, thin-and-light case for the minimalist professional. This compact design carries, protects and organizes your laptop and everyday work essentials, while premi...

Recommended Services

BEST	5Y Premier Support upgrade from 1Y Premier Support (5WS1F52292)
BETTER	4Y Premier Support upgrade from 1Y Premier Support (5WS1F52288)
GOOD	2Y Premier Support upgrade from 1Y Premier Support (5WS1B61702)

For a full list of accessories and services, please visit:
<https://smartfind.Lenovo.com>



PSREF
Product Specifications
Reference