

## PERFORMANCE

### Processor

Intel® Core™ i5-1135G7 (4C / 8T, 2.4 / 4.2GHz, 8MB)

### Graphics

NVIDIA® Quadro® T500 4GB GDDR6

### Chipset

Intel SoC Platform

### Memory

8GB Soldered DDR4-3200 non-ECC + 8GB SO-DIMM DDR4-3200 non-ECC

### Memory Slots

One memory soldered to systemboard, one DDR4 SO-DIMM slot, dual-channel capable

### Max Memory

Up to 40GB (8GB soldered + 32GB SO-DIMM) DDR4-3200

### Storage

512GB SSD M.2 2280 PCIe® x4 NVMe® Opal2

### Storage Support

One drive, up to 2TB M.2 2280 SSD

### Storage Slot

One M.2 2280 PCIe Gen 3x4 slot, supports M.2 2242/2280 SSD

### Card Reader

MicroSD Card Reader

### Audio Chip

High Definition (HD) Audio, Realtek® ALC3287 codec

### Speakers

Stereo speakers, 2W x2, Dolby® Audio™

### Camera

IR & HD 720p with Privacy Shutter

### Microphone

2x, Array

### Battery

Integrated 50Wh

### Max Battery Life

MobileMark® 2018: 9.7 hr

JEITA 2.0: 16 hr

### Power Adapter

65W USB-C® (3-pin)

## DESIGN

### Display

14" FHD (1920x1080) Low Power IPS 400nits Anti-glare

### Keyboard

Backlit, German

### Case Color

Black

### Case Material

PC + ABS (Top), PC + ABS / Talc15 + Magnesium Alloy (Keyboard Cover), PA / 50% GF (Bottom)

### Dimensions (WxDxH)

329 x 227 x 17.9 mm (12.95 x 8.94 x 0.70 inches)

### Weight

1.469 kg (3.24 lbs)

## SOFTWARE

### Operating System

Windows® 11 DG Windows 10 Pro 64, German

## CONNECTIVITY

### Ethernet

100/1000M

### WLAN + Bluetooth®

Intel AX201 11ax, 2x2 + BT5.2

### WWAN

Quectel EM120R-GL with Embedded eSIM

### Standard Ports

- 1x USB 3.2 Gen 1
- 1x USB 3.2 Gen 1 (Always On)
- 2x Thunderbolt™ 4 / USB4® 40Gbps (support data transfer, Power Delivery 3.0 and DisplayPort™ 1.4)
- 1x HDMI® 2.0
- 1x microSD card reader
- 1x Headphone / microphone combo jack (3.5mm)

### Optional Ports (configured)

1x RJ45 + 1x Smart Card Reader

### Docking

Various docking solutions supported via side docking connector (optional), Thunderbolt or USB-C.

For more compatible docking solutions, please visit [Docking for ThinkPad® P14s Gen 2 \(Intel\)](#)

## SECURITY & PRIVACY

### Smart Card Reader

Smart Card Reader

### Security Chip

Discrete TPM 2.0

### Fingerprint Reader

Touch Style, Match-on-Chip

### Physical Locks

Kensington® Security Slot, 3 x 7 mm

## MANAGEABILITY

### System Management

Non-vPro

## SERVICE

### Base Warranty

3-year, Depot

### Included Upgrade

1Y Premier Support from 3Y Depot Windchill bundles (CPN) (5WS1B68729)

## CERTIFICATIONS

### Green Certifications

- EPEAT™ Gold
- ENERGY STAR® 8.0
- TCO Certified Notebooks 8
- RoHS compliant

### Mil-Spec Test

MIL-STD-810H military test passed

### ISV Certifications

Please visit [www.thinkworkstations.com/isv-certifications/](http://www.thinkworkstations.com/isv-certifications/)

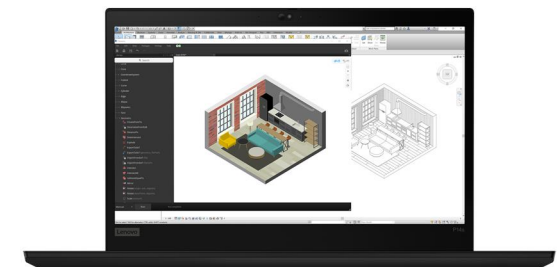
## MODEL

TopSeller : Yes

Announce Date : 2022-04-05

EAN / UPC / JAN : 0196800619525

End of Support : 2027-09-23



- Lenovo reserves the right to change specifications or other product information without notice.
- Product image on this page is a sample, it may not match the real color of this model
- Battery life is an estimated maximum. Actual battery life may vary based on many factors, including screen brightness, active applications, features, power management settings, battery age and conditioning, and other customer preferences

## Premier Support - A direct 24x7x365 line to our most elite technicians.



Advanced technical support, 24x7x365, in more than 100 markets



Technical Account Managers for proactive relationship and escalation management



Comprehensive hardware & OEM software support



Priority on service delivery and repair parts



Single point of contact for simplified end-to-end case management



Lenovo Service Connect Portal for customized reporting and product support

## Accidental Damage Protection - Protection of your PC from the unexpected.

Experience shows that a significant portion of devices may be damaged (and not covered under warranty) in the first three years. Lenovo's Accidental Damage Protection service covers accidents beyond the system warranty such as drops, spills, bumps and even electrical surges. Make sure your new device has maximum protection, avoid unplanned costs and get peace of mind.

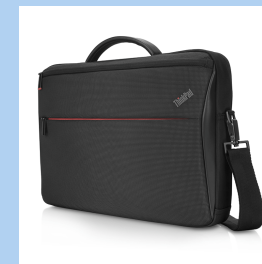
## Base Warranty - Included with the systems you purchase, default 1- or 3-year coverage window.

## Warranty Extensions & Upgrades - Service and protection that's right for your circumstances.

- Pick Up & Return Courier
- Onsite Support
- Technician Installed Customer
- Replaceable Unit Service
- International Warranty Upgrade

Lenovo may not offer the products, services or features discussed in this document in all regions. Lenovo may withdraw an offering at any time. Information is subject to change without notice. Consult your local representative for information on offerings available in your area. Lenovo reserves the right to change specifications or other product information without notice. Lenovo is not responsible for photographic or typographical errors. Lenovo provides this publication "as is" without warranty of any kind, either express or implied, including the implied warranties of merchantability or fitness for a particular purpose.

## Recommended Accessories



### ThinkPad 14-inch Professional Slim Topload 4X40W19826

The ThinkPad 14-inch Professional Slim Topload is a sleek, thin-and-light case for the minimalist professional. This compact design carries, protects and organizes your laptop and everyday work essentials, while premi...

## Recommended Services

BEST	5Y Premier Support upgrade from 1Y Premier Support (5WS1F52292)
BETTER	4Y Premier Support upgrade from 1Y Premier Support (5WS1F52288)
GOOD	2Y Premier Support upgrade from 1Y Premier Support (5WS1B61702)

For a full list of accessories and services, please visit:  
<https://smartfind.Lenovo.com>



**PSREF**  
Product Specifications  
Reference